



***ECHO** tourism **STAT**istics*

*Performance Report on Québec City
Tourist Industry*

APRIL 2007



Designed and produced by:

Marc Giguère and Michel Goupil

Québec City Tourism
Development, Strategy and Planning Division

For information or comments, please contact:

Marc Giguère
Tel: 418-641-6654 extension 5404
Fax: 418-641-6578
Email: marc.giguere@quebecregion.com

Michel Goupil
Tel: 418-641-6654 extension 5406
Fax: 418-641-6578
Email: michel.goupil@quebecregion.com

Thank you

to all our partners and collaborators



Caution

The statistics and analyses presented in this document are produced according to the information available at the time of production. Modifications could be made to subsequent publications.

HIGHLIGHTS - APRIL 2007

FOURTH STRAIGHT INCREASE IN AGREGATE INDEX IN APRIL, AFTER FOUR MONTH YEAR-TO-DATE INDEX IS INCREASING BY 1,7%

	2005	2006	2007	
	Index (*)	Index (*)	Index (*)	% Change
Total tourist activity - aggregate index (**)				
April	100,9	100,4	103,7	↗ 3,3%
Year-to-date	100,2	99,8	101,4	↗ 1,7%
<i>Lodging - room occupancy evolution index</i>				
April	111,3	103,0	105,4	↗ 2,3%
Year-to-date	105,1	103,2	105,7	↗ 2,4%
<i>Sites and attractions - admissions evolution index</i>				
April	97,0	102,8	119,0	↗ 15,8%
Year-to-date	105,4	101,1	109,5	↗ 8,3%
<i>Retail stores - transactions evolution index</i>				
April	98,0	114,2	98,0	↘ -14,2%
Year-to-date	103,0	108,8	98,1	↘ -9,8%
<i>Restaurant indus. - meals served evolution index</i>				
April	89,7	92,5	98,6	↗ 6,6%
Year-to-date	91,6	92,4	94,5	↗ 2,3%
	Request	Request	Request	% Change
QCT information centres - at-the-counter information request				
April	2 056	2 276	2 024	↘ -11,1%
Year-to-date	7 721	7 089	6 842	↘ -3,5%

(*) **The monthly base index of 100** is equal to the ratio between the Σ of results (number of rooms occupied, number of meals served, etc.) obtained from a sample taken during the month or over a given period and the Σ of results obtained from the same sample during the same month or given period of the base year. **The base year chosen for the current index is 2002.** The example below illustrates the equation:

(the Σ of rooms occupied in January of year X / the Σ of rooms occupied in January 2002) X 100. If the index is superior to 100, the number of rooms occupied has increase with reference to the base year.

(**) **The monthly aggregate index** is obtained through weighting the four leading sectors of tourist activity. The weighting mode is explained in detail in the publication on the page presenting the index.

This publication also includes the following statistics:

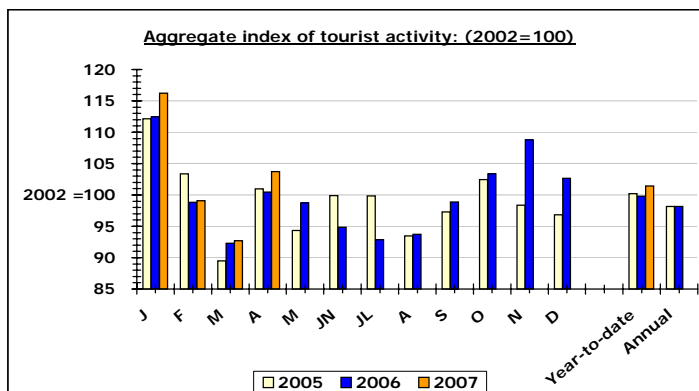
- Leading monthly statistics on the hotel industry and bed and breakfast.
- Enplaned passengers index at Jean-Lesage international Airport.
- A forecast of upcoming events and conventions held in the region.
- Socio-economic and demographic information on the region.
- A short profile of the tourists visiting our region, notably where they are from, the length of their stay, their expenditures and their activities.

ÉCHO tourism STATistics is also available on the Bureau's Web site:

<http://www.quebecregion.com/e/otq-dev-echostat.asp>

MONTHLY TOURISM PERFORMANCE INDICATORS (2002 = 100)
APRIL 2007

	2 005	2 006	2 007	
	Index	Index	Index	% Var.
TOTAL TOURIST ACTIVITY				
<i>Aggregate index of tourist activity (1)</i>				
January	112,2	112,4	116,2	3,3%
February	103,4	98,8	99,1	0,3%
March	89,5	92,3	92,7	0,4%
April	100,9	100,4	103,7	3,3%
May	94,3	98,7		
June	99,9	94,9		
July	99,9	92,9		
August	93,5	93,7		
September	97,3	98,9		
October	102,4	103,4		
November	98,4	108,8		
December	96,8	102,7		
Year-to-date	100,2	99,8	101,4	1,7%
Annual	98,2	98,2		



(1) Obtained by weighting the indexes for "Lodging" (44,7%), "Restaurant Industry" (34,8%), "Sites and Attractions" (10,5%) and "Boutiques/Retail Stores" (10,0%) based on the results of the survey on the breakdown of expenditures incurred by tourists who visited the Québec City region, performed by Statistics Canada (CITIES 2004 Project). The index enables measuring the monthly and seasonal variations of regional tourist activity.

LODGING				
<i>Room occupancy evolution index (2)</i>				
4 to 39 rooms				
April	111,8	111,9	116,1	3,8%
Year-to-date	101,2	100,7	101,6	0,9%
Annual	94,9	96,5		
40 to 199 rooms				
April	111,1	104,5	108,9	4,2%
Year-to-date	105,5	105,8	110,5	4,4%
Annual	104,7	106,3		
200 rooms or more				
April	109,1	97,8	97,5	-0,3%
Year-to-date	104,5	99,7	100,2	0,5%
Annual	100,4	98,5		
Total				
January	122,7	119,6	125,3	4,8%
February	102,0	101,7	101,4	-0,3%
March	92,0	94,4	97,8	3,6%
April	111,3	103,0	105,4	2,3%
May	98,5	106,7		
June	103,2	98,6		
July	101,1	94,1		
August	94,2	95,2		
September	98,2	100,5		
October	106,7	106,8		
November	110,4	115,3		
December	98,4	106,4		
Year-to-date	105,1	103,2	105,7	2,4%
Annual	101,9	101,9		

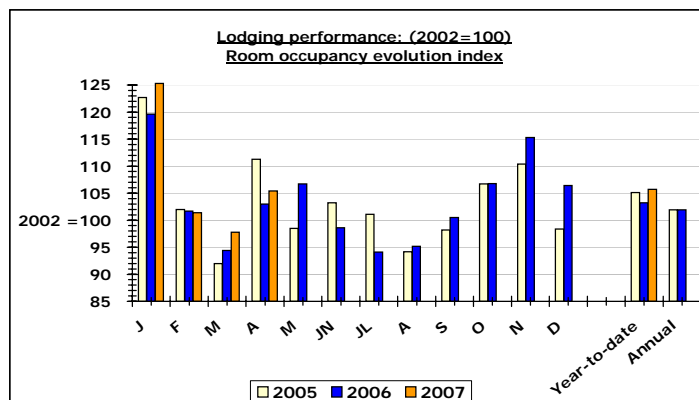
IN BRIEF

AGGREGATE INDEX OF TOURIST ACTIVITY

APRIL: 3 POINT INCREASE
YEAR TO DATE: 2 POINT INCREASE

LODGING

APRIL: 2 POINT INCREASE
YEAR-TO-DATE: 2 POINT INCREASE



(2) Performed at all hotel establishments (approximately 245). The index enables measuring the monthly and seasonal variations in the number of occupied rooms.

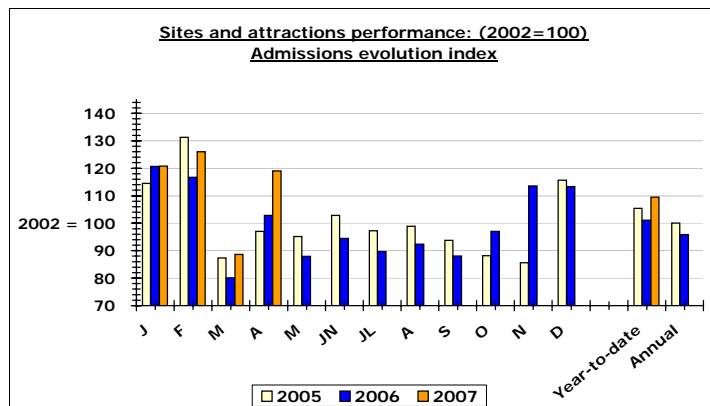
MONTHLY TOURISM PERFORMANCE INDICATORS (2002 = 100)
APRIL 2007 (cont.)

	2 005	2 006	2 007	
	Index	Index	Index	% Var.
SITES AND ATTRACTIONS				
<i>Admissions evolution index (1)</i>				
Indoor activities				
April	102,6	98,4	122,7	24,7%
Year-to-date	91,9	87,9	112,3	27,8%
Annual	93,3	88,6		
Outdoor activities				
April	84,7	112,7	110,7	-1,8%
Year-to-date	115,1	110,6	107,5	-2,8%
Annual	107,0	103,0		
Total				
January	114,5	120,7	120,8	0,1%
February	131,3	116,7	126,0	8,0%
March	87,4	80,1	88,6	10,6%
April	97,0	102,8	119,0	15,8%
May	95,2	87,9		
June	102,8	94,4		
July	97,3	89,7		
August	98,9	92,4		
September	93,8	88,1		
October	88,2	97,0		
November	85,6	113,6		
December	115,7	113,3		
Year-to-date	105,4	101,1	109,5	8,3%
Annual	100,1	95,8		

IN BRIEF

SITES AND ATTRACTIONS

APRIL: 16 POINT INCREASE
YEAR-TO-DATE: 8 POINT INCREASE

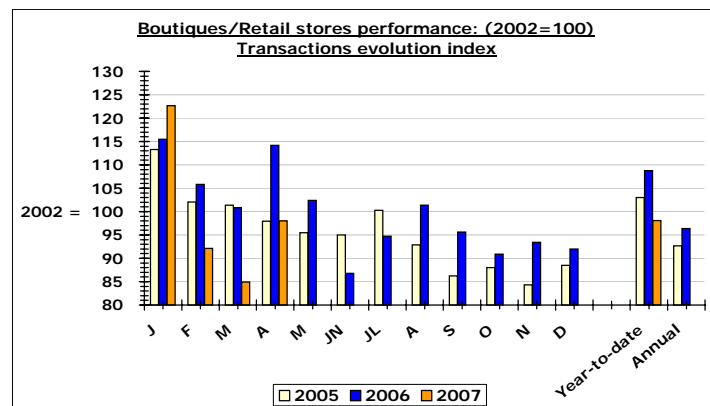


(1) Based on the number of paying and non-paying entrance fees taken from 38 regional sites and attractions. The index enables measuring monthly and seasonal attendance variations.

IN BRIEF

BOUTIQUES/RETAIL STORES

APRIL: 14 POINT DECREASE
YEAR-TO-DATE: 10 POINT DECREASE



(2) Based on the number of transactions performed at 25 boutiques/retail stores located in the Old-Québec and Lower Town areas. The index enables measuring the monthly and seasonal variations of clients.

BOUTIQUES/RETAIL STORES				
<i>Transactions evolution index (2)</i>				
January	113,3	115,5	122,7	6,2%
February	102,1	105,8	92,1	-12,9%
March	101,3	100,8	84,9	-15,8%
April	98,0	114,2	98,0	-14,2%
May	95,5	102,4		
June	95,0	86,8		
July	100,3	94,7		
August	92,8	101,4		
September	86,3	95,6		
October	88,0	90,9		
November	84,3	93,4		
December	88,5	92,0		
Year-to-date	103,0	108,8	98,1	-9,8%
Annual	92,7	96,4		

MONTHLY TOURISM PERFORMANCE INDICATORS (2002 = 100)
APRIL 2007 (cont.)

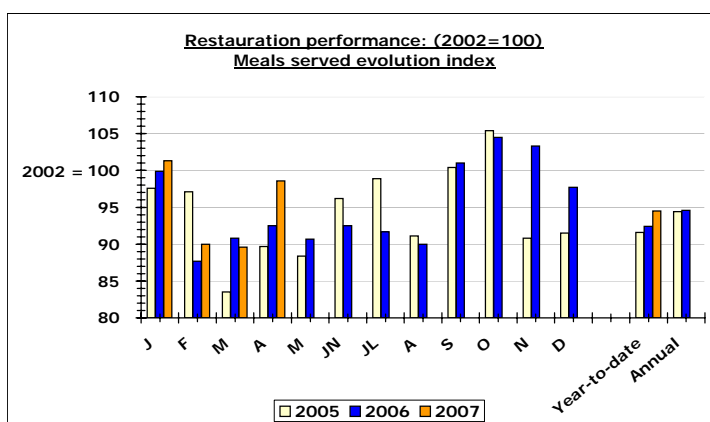
	2 005	2 006	2 007	
	Index	Index	Index	% Var.
RESTAURANT INDUSTRY				
<i>Meals served evolution index (1)</i>				
Restaurants - 1 to 99 seats				
April	95,9	90,9	85,0	-6,5%
Year-to-date	89,2	80,7	82,2	1,9%
Annual	87,9	78,6		
Restaurants - 100 seats or more				
April	89,3	92,6	99,4	7,3%
Year-to-date	91,7	92,9	95,1	2,4%
Annual	94,9	95,8		
Total				
January	97,6	99,9	101,3	1,4%
February	97,1	87,7	90,0	2,6%
March	83,5	90,8	89,6	-1,3%
April	89,7	92,5	98,6	6,6%
May	88,4	90,7		
June	96,2	92,5		
July	98,9	91,7		
August	91,1	90,0		
September	100,4	101,0		
October	105,4	104,5		
November	90,8	103,3		
December	91,5	97,7		
Year-to-date	91,6	92,4	94,5	2,3%
Annual	94,4	94,6		

BED & BREAKFAST				
<i>Occupancy rate evolution (1)</i>				
January	21,9	15,8	21,5	36,1%
February	39,7	31,4	31,8	1,3%
March	25,7	22,9	25,4	10,9%
April	20,9	18,9	17,0	-10,1%
May	38,8	38,2		
June	57,2	44,0		
July	75,3	67,2		
August	79,2	73,8		
September	54,2	53,9		
October	40,8	39,2		
November	12,5	17,7		
December	23,8	28,0		
Year-to-date	27,0	22,5	24,0	6,7%
Annual	42,4	38,9		

IN BRIEF

RESTAURANT INDUSTRY

APRIL: 7 POINT INCREASE
YEAR-TO-DATE: 2 POINT INCREASE

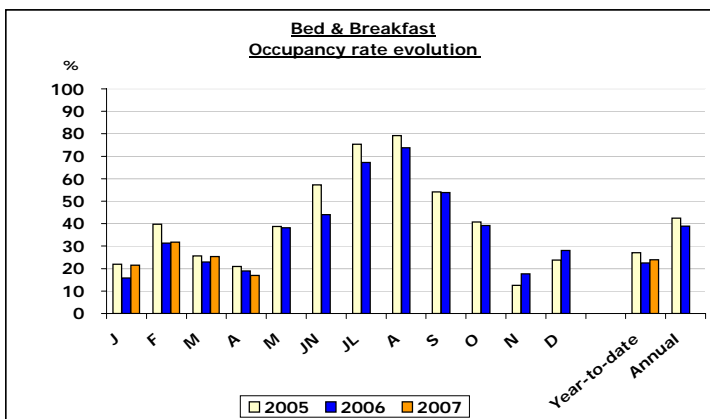


(1) Based on the number of meals served in 35 restaurants of the region. The index enables measuring the monthly and seasonal variations of clients.

IN BRIEF

BED & BREAKFAST

APRIL: 10 POINT DECREASE
YEAR-TO-DATE: 7 POINT INCREASE



(1) Based on occupancy rate of 15 Bed & Breakfast of the region.

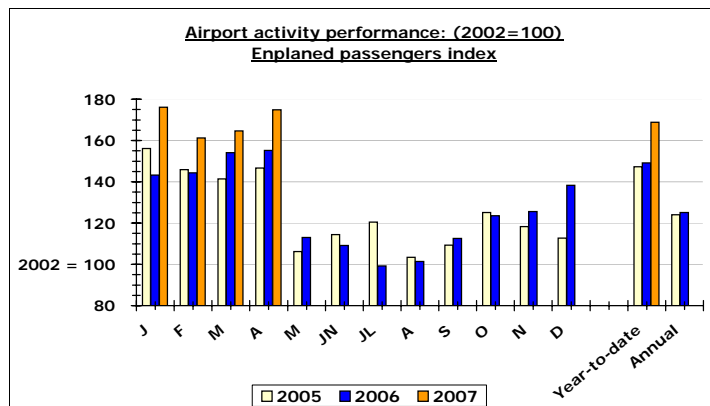
MONTHLY TOURISM PERFORMANCE INDICATORS (2002 = 100)
APRIL 2007 (end)

	2 005	2 006	2 007	
	Index	Index	Index	% Var.
JEAN-LESAGE INTERNATIONAL AIRPORT				
<i>Enplaned passengers index</i>				
Domestic flights				
April	112,5	106,1	122,4	15,4%
Year-to-date	112,7	111,6	113,1	1,3%
Annual	108,1	104,2		
Transborder and international flights				
April	366,1	471,1	512,5	8,8%
Year-to-date	271,9	284,2	369,2	29,9%
Annual	195,3	218,8		
Total				
January	156,1	143,3	176,1	22,9%
February	145,9	144,3	161,3	11,7%
March	141,3	154,1	164,6	6,8%
April	146,7	155,2	174,9	12,7%
May	106,3	113,1		
June	114,4	109,1		
July	120,4	99,2		
August	103,3	101,4		
September	109,3	112,5		
October	125,1	123,6		
November	118,3	125,5		
December	112,8	138,3		
Year-to-date	147,3	149,1	168,8	13,2%
Annual	124,0	125,2		

IN BRIEF

JEAN-LESAGE INTERNATIONAL AIRPORT

APRIL: 13 POINT INCREASE
YEAR-TO-DATE: 13 POINT INCREASE



MONTHLY TOURISM PERFORMANCE INDICATORS (2002 = 100)
2002-2007 SUMMARY

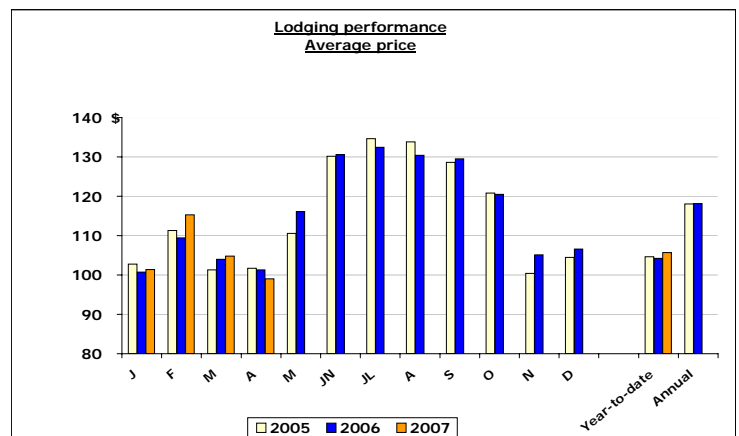
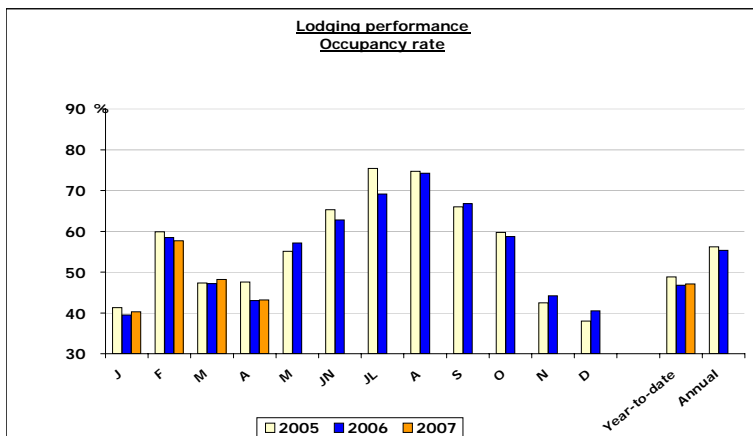
	2 003	2 004	2 005	2 006	2 007		2 003	2 004	2 005	2 006	2 007
	Index	Index	Index	Index	Index		Index	Index	Index	Index	Index
TOTAL TOURIST ACTIVITY						BOUTIQUES/RETAIL STORES					
<i>Aggregate index of tourist activity</i>						<i>Transactions evolution index</i>					
January	110,3	106,5	112,2	112,4	116,2	January	128,1	116,7	113,3	115,5	122,7
February	101,3	101,7	103,4	98,8	99,1	February	123,0	118,3	102,1	105,8	92,1
March	93,6	92,6	89,5	92,3	92,7	March	107,3	112,6	101,3	100,8	84,9
April	99,3	103,4	100,9	100,4	103,7	April	104,6	120,0	98,0	114,2	98,0
May	95,9	98,9	94,3	98,7		May	88,6	110,6	95,5	102,4	
June	96,6	97,5	99,9	94,9		June	85,2	101,8	95,0	86,8	
July	87,3	97,1	99,9	92,9		July	88,7	102,4	100,3	94,7	
August	93,5	95,8	93,5	93,7		August	92,8	103,8	92,8	101,4	
September	90,9	100,9	97,3	98,9		September	83,6	96,2	86,3	95,6	
October	97,4	108,1	102,4	103,4		October	84,4	96,1	88,0	90,9	
November	100,0	102,4	98,4	108,8		November	93,9	89,1	84,3	93,4	
December	91,6	97,2	96,8	102,7		December	93,6	89,6	88,5	92,0	
Year-to-date	101,1	101,0	100,2	99,8	101,4	Year-to-date	115,7	116,9	103,0	108,8	98,1
Annual	94,8	99,1	98,2	98,2		Annual	91,4	100,8	92,7	96,4	
LODGING						RESTAURANT INDUSTRY					
<i>Room occupancy evolution index</i>						<i>Meals served evolution index</i>					
January	115,1	112,1	122,7	119,6	125,3	January	103,1	94,4	97,6	99,9	101,3
February	103,1	93,7	102,0	101,7	101,4	February	92,9	94,9	97,1	87,7	90,0
March	96,0	94,0	92,0	94,4	97,8	March	92,5	86,9	83,5	90,8	89,6
April	101,0	101,4	111,3	103,0	105,4	April	95,9	95,3	89,7	92,5	98,6
May	95,8	98,6	98,5	106,7		May	96,1	95,4	88,4	90,7	
June	94,1	97,6	103,2	98,6		June	102,4	95,8	96,2	92,5	
July	85,1	98,7	101,1	94,1		July	90,9	95,9	98,9	91,7	
August	92,7	95,1	94,2	95,2		August	94,4	94,7	91,1	90,0	
September	89,4	102,1	98,2	100,5		September	96,6	102,6	100,4	101,0	
October	98,1	112,1	106,7	106,8		October	102,6	108,6	105,4	104,5	
November	103,6	108,8	110,4	115,3		November	98,2	94,9	90,8	103,3	
December	91,9	100,9	98,4	106,4		December	87,8	91,1	91,5	97,7	
Year-to-date	103,8	100,3	105,1	103,2	105,7	Year-to-date	96,1	92,9	91,6	92,4	94,5
Annual	95,6	100,7	101,9	101,9		Annual	95,8	96,0	94,4	94,6	
SITES AND ATTRACTIONS						JEAN-LESAGE INTERNATIONAL AIRPORT					
<i>Admissions evolution index</i>						<i>Enplaned passengers index</i>					
January	97,2	113,0	114,5	120,7	120,8	January	124,1	130,9	156,1	143,3	176,1
February	101,3	142,9	131,3	116,7	126,0	February	119,3	124,3	145,9	144,3	161,3
March	73,9	86,1	87,4	80,1	88,6	March	123,2	124,5	141,3	154,1	164,6
April	98,8	122,8	97,0	102,8	119,0	April	105,9	131,2	146,7	155,2	174,9
May	102,7	100,5	95,2	87,9		May	87,4	109,7	106,3	113,1	
June	98,3	98,2	102,8	94,4		June	100,4	107,1	114,4	109,1	
July	83,5	89,3	97,3	89,7		July	87,2	106,9	120,4	99,2	
August	94,1	94,6	98,9	92,4		August	93,0	103,8	103,3	101,4	
September	85,4	94,7	93,8	88,1		September	97,2	106,7	109,3	112,5	
October	89,3	100,6	88,2	97,0		October	93,0	112,7	125,1	123,6	
November	96,5	113,0	85,6	113,6		November	103,7	119,7	118,3	125,5	
December	101,4	109,0	115,7	113,3		December	103,6	118,3	112,8	138,3	
Year-to-date	92,8	116,2	105,4	101,1	109,5	Year-to-date	118,1	127,8	147,3	149,1	168,8
Annual	91,7	100,8	100,1	95,8		Annual	102,5	115,5	124,0	125,2	

The best index of the period

LODGING STATISTICS - QUÉBEC CITY AND AREA
APRIL 2007

		Number of rooms												Total			
		4 to 39				40 to 199				200 +							
		2005	2006	2007	% Var	2005	2006	2007	% Var	2005	2006	2007	% Var	2005	2006	2007	% Var
January	Available rooms	2 234	2 227	2 277	2,2%	5 222	5 433	5 663	4,2%	3 912	3 921	3 941	0,5%	11 366	11 582	11 880	2,6%
	Occupancy rate	71,0	26,7	27,0	1,1%	41,6	41,3	43,7	5,8%	49,9	44,2	43,3	-2,0%	41,3	39,5	40,3	2,0%
	Average price	71,00 \$	73,20 \$	80,50 \$	10,0%	93,00 \$	97,30 \$	94,80 \$	-2,6%	121,10 \$	114,40 \$	119,10 \$	4,1%	102,80 \$	100,70 \$	101,40 \$	0,7%
February	Available rooms	2 393	2 340	2 324	-0,7%	5 259	5 541	5 675	2,4%	3 912	3 921	3 936	0,4%	11 562	11 802	11 935	1,1%
	Occupancy rate	38,2	39,3	38,1	-3,1%	62,7	60,1	58,0	-3,5%	69,6	67,8	68,8	1,5%	59,9	58,5	57,7	-1,4%
	Average price	81,30 \$	76,10 \$	85,60 \$	12,5%	100,30 \$	100,50 \$	102,50 \$	2,0%	134,70 \$	132,10 \$	140,30 \$	6,2%	111,30 \$	109,40 \$	115,30 \$	5,4%
March	Available rooms	2 354	2 294	2 295	0,0%	5 170	5 542	5 699	2,8%	3 912	3 921	3 936	0,4%	11 435	11 756	11 928	1,5%
	Occupancy rate	31,7	30,6	31,2	2,0%	51,0	48,9	50,4	3,1%	52,0	54,6	55,1	0,9%	47,3	47,2	48,2	2,1%
	Average price	75,70 \$	76,20 \$	83,70 \$	9,8%	94,90 \$	100,30 \$	97,30 \$	-3,0%	118,90 \$	117,90 \$	122,00 \$	3,5%	101,30 \$	104,00 \$	104,80 \$	0,8%
April	Available rooms	2 326	2 292	2 256	-1,6%	5 140	5 422	5 671	4,6%	3 912	3 939	3 936	-0,1%	11 381	11 652	11 862	1,8%
	Occupancy rate	26,5	26,9	28,4	5,6%	48,2	43,0	42,8	-0,5%	59,0	52,5	52,4	-0,2%	47,6	43,0	43,2	0,5%
	Average price	62,00 \$	66,70 \$	76,10 \$	14,1%	91,40 \$	94,40 \$	92,30 \$	-2,2%	122,60 \$	119,30 \$	114,10 \$	-4,4%	101,70 \$	101,30 \$	99,00 \$	-2,3%
May	Available rooms	2 419	2 459			5 129	5 596			3 921	3 939			11 471	11 990		
	Occupancy rate	32,7	35,0			57,7	57,4			65,5	71,1			55,1	57,1		
	Average price	74,40 \$	78,20 \$			99,50 \$	103,60 \$			134,00 \$	143,20 \$			110,60 \$	116,10 \$		
June	Available rooms	2 520	2 509			5 485	5 408			3 921	3 939			11 925	11 856		
	Occupancy rate	43,3	42,6			67,2	64,1			77,0	74,4			65,3	62,8		
	Average price	84,60 \$	88,60 \$			126,40 \$	124,10 \$			151,40 \$	155,10 \$			130,20 \$	130,60 \$		
July	Available rooms	2 595	2 570			5 451	5 641			3 921	3 939			11 967	12 149		
	Occupancy rate	61,2	57,7			76,2	68,8			83,8	77,3			75,4	69,1		
	Average price	98,40 \$	97,50 \$			132,30 \$	132,50 \$			155,10 \$	150,00 \$			134,60 \$	132,40 \$		
August	Available rooms	2 593	2 585			5 451	5 643			3 921	3 939			11 966	12 166		
	Occupancy rate	61,2	62,3			76,0	74,8			81,7	81,4			74,7	74,2		
	Average price	98,40 \$	97,40 \$			128,60 \$	125,50 \$			157,90 \$	153,80 \$			133,80 \$	130,40 \$		
September	Available rooms	2 575	2 549			5 477	5 636			3 921	3 939			11 974	12 121		
	Occupancy rate	44,9	46,5			70,3	71,4			73,6	74,1			66,0	66,8		
	Average price	86,70 \$	90,70 \$			121,90 \$	122,60 \$			153,90 \$	156,60 \$			128,60 \$	129,50 \$		
October	Available rooms	2 455	2 457			5 432	5 623			3 921	3 939			11 810	12 018		
	Occupancy rate	36,9	39,1			60,7	60,6			72,4	68,2			59,7	58,7		
	Average price	79,50 \$	83,10 \$			108,50 \$	106,50 \$			148,00 \$	151,60 \$			120,80 \$	120,50 \$		
November	Available rooms	2 253	2 277			5 487	5 495			3 921	3 939			11 660	11 712		
	Occupancy rate	25,0	26,3			41,8	44,9			53,4	53,5			42,5	44,2		
	Average price	61,30 \$	67,30 \$			93,80 \$	97,70 \$			118,10 \$	124,20 \$			100,40 \$	105,10 \$		
December	Available rooms	2 261	2 259			5 469	5 640			3 921	3 941			11 652	11 840		
	Occupancy rate	25,4	30,2			40,2	43,3			82,0	42,3			38,0	40,5		
	Average price	81,60 \$	81,00 \$			101,60 \$	102,00 \$			115,90 \$	123,60 \$			104,50 \$	106,60 \$		
Year-to-date average	Available rooms	2 325	2 287	2 288	0,0%	5 197	5 484	5 677	3,5%	3 912	3 926	3 937	0,3%	11 433	11 695	11 901	1,8%
	Occupancy rate	30,4	30,8	31,0	0,6%	50,6	48,1	48,5	0,8%	57,3	54,5	54,6	0,2%	48,8	46,8	47,1	0,6%
	Average price	75,05 \$	73,47 \$	81,84 \$	11,4%	95,27 \$	98,40 \$	97,05 \$	-1,4%	124,82 \$	121,63 \$	124,91 \$	2,7%	104,61 \$	104,26 \$	105,72 \$	1,4%
Annual average	Available rooms	2 415	2 402			5 348	5 552			3 918	3 935			11 681	11 888		
	Occupancy rate	38,4	39,2			57,9	56,6			65,0	63,4			56,2	55,3		
	Average price	83,95 \$	84,69 \$			110,87 \$	111,32 \$			139,01 \$	139,76 \$			118,05 \$	118,10 \$		

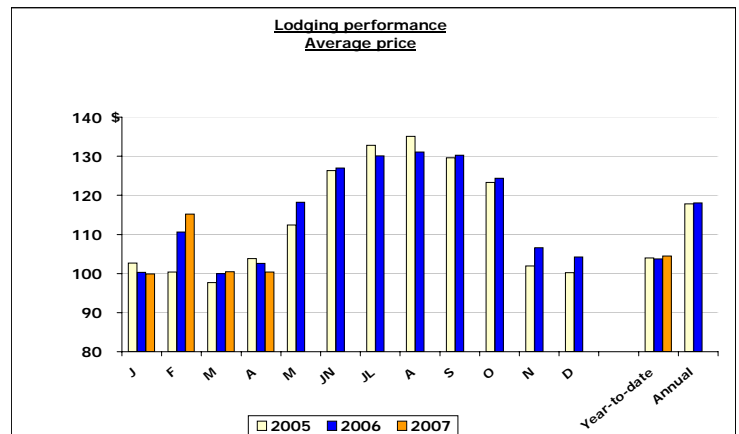
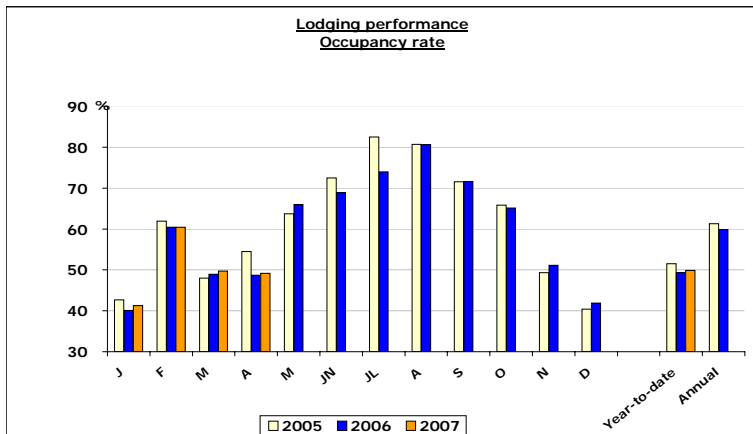
Québec City and Area



LODGING STATISTICS - QUÉBEC CITY
APRIL 2007

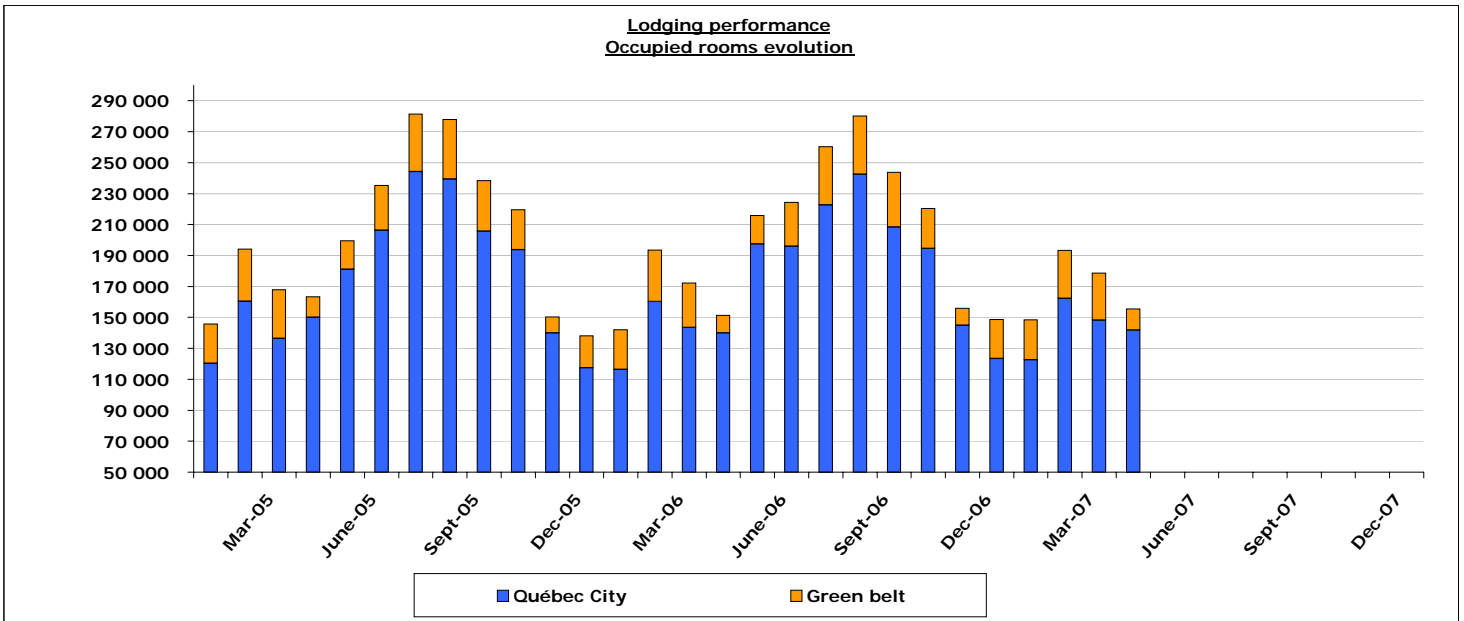
		Number of rooms												Total			
		4 to 39				40 to 199				200 +							
		2005	2006	2007	% Var	2005	2006	2007	% Var	2005	2006	2007	% Var	2005	2006	2007	% Var
January	Available rooms	1 187	1 205	1 264	4,9%	4 226	4 485	4 612	2,8%	3 672	3 681	3 701	0,5%	9 080	9 365	9 569	2,2%
	Occupancy rate	71,0	26,7	30,4	13,9%	41,8	40,7	43,8	7,6%	49,7	44,2	43,1	-2,5%	42,7	40,1	41,3	3,0%
	Average price	71,00 \$	65,70 \$	66,20 \$	0,8%	91,20 \$	96,30 \$	93,40 \$	-3,0%	120,20 \$	111,60 \$	116,50 \$	4,4%	102,70 \$	100,30 \$	99,90 \$	-0,4%
February	Available rooms	1 343	1 322	1 289	-2,5%	4 239	4 485	4 631	3,3%	3 672	3 681	3 696	0,4%	9 252	9 485	9 608	1,3%
	Occupancy rate	37,9	37,6	39,4	4,8%	64,3	60,7	59,4	-2,1%	68,6	68,5	69,3	1,2%	61,9	60,4	60,4	0,0%
	Average price	77,80 \$	73,30 \$	75,70 \$	3,3%	97,10 \$	100,00 \$	100,60 \$	0,6%	132,50 \$	129,60 \$	138,50 \$	6,9%	100,40 \$	110,60 \$	115,20 \$	4,2%
March	Available rooms	1 294	1 295	1 264	-2,4%	4 220	4 493	4 684	4,3%	3 672	3 681	3 696	0,4%	9 178	9 465	9 630	1,7%
	Occupancy rate	32,2	33,4	32,0	-4,2%	51,9	50,5	51,6	2,2%	50,7	53,4	54,3	1,7%	48,0	48,9	49,7	1,6%
	Average price	64,30 \$	63,50 \$	75,50 \$	18,9%	89,50 \$	96,10 \$	93,40 \$	-2,8%	114,70 \$	112,40 \$	116,40 \$	3,6%	97,70 \$	100,00 \$	100,50 \$	0,5%
April	Available rooms	1 297	1 324	1 264	-4,5%	4 222	4 572	4 656	1,8%	3 672	3 699	3 696	-0,1%	9 187	9 589	9 611	0,2%
	Occupancy rate	33,9	33,1	35,6	7,6%	55,5	48,6	49,2	1,2%	61,4	54,7	54,1	-1,1%	54,5	48,7	49,2	1,0%
	Average price	62,40 \$	66,70 \$	76,40 \$	14,5%	92,80 \$	94,30 \$	93,60 \$	-0,7%	123,00 \$	119,60 \$	114,10 \$	-4,6%	103,80 \$	102,60 \$	100,40 \$	-2,1%
May	Available rooms	1 323	1 408			4 165	4 549			3 681	3 699			9 174	9 657		
	Occupancy rate	43,4	49,1			65,9	64,0			68,8	74,8			63,7	66,0		
	Average price	76,70 \$	78,70 \$			98,70 \$	102,60 \$			134,60 \$	144,00 \$			112,40 \$	118,20 \$		
June	Available rooms	1 355	1 417			4 457	4 361			3 681	3 699			9 491	9 480		
	Occupancy rate	55,2	54,1			72,2	67,6			79,4	76,4			72,5	68,9		
	Average price	85,90 \$	85,90 \$			111,10 \$	108,90 \$			153,50 \$	157,30 \$			126,30 \$	127,00 \$		
July	Available rooms	1 397	1 424			4 472	4 587			3 681	3 699			9 551	9 711		
	Occupancy rate	72,7	65,5			83,2	72,8			85,7	79,0			82,5	74,0		
	Average price	97,60 \$	98,10 \$			121,30 \$	120,80 \$			158,10 \$	151,90 \$			132,80 \$	130,10 \$		
August	Available rooms	1 415	1 427			4 472	4 589			3 681	3 699			9 568	9 715		
	Occupancy rate	73,2	73,0			81,2	80,8			83,1	83,4			80,7	80,6		
	Average price	101,30 \$	100,80 \$			123,00 \$	119,60 \$			160,80 \$	155,60 \$			135,10 \$	131,10 \$		
September	Available rooms	1 411	1 427			4 497	4 581			3 681	3 699			9 589	9 707		
	Occupancy rate	55,9	57,0			73,9	74,3			74,8	74,4			71,5	71,6		
	Average price	92,70 \$	89,10 \$			115,50 \$	115,40 \$			157,30 \$	161,30 \$			129,60 \$	130,30 \$		
October	Available rooms	1 369	1 376			4 452	4 568			3 681	3 699			9 502	9 641		
	Occupancy rate	46,6	47,6			65,1	66,1			73,7	70,7			65,8	65,1		
	Average price	80,90 \$	83,90 \$			107,00 \$	107,30 \$			150,50 \$	154,00 \$			123,30 \$	124,40 \$		
November	Available rooms	1 237	1 264			4 547	4 491			3 681	3 699			9 455	9 448		
	Occupancy rate	35,4	34,6			48,5	52,3			55,7	55,7			49,3	51,1		
	Average price	59,20 \$	71,20 \$			94,10 \$	98,30 \$			119,20 \$	124,90 \$			101,90 \$	106,60 \$		
December	Available rooms	1 197	1 201			4 521	4 615			3 681	3 701			9 391	9 502		
	Occupancy rate	28,7	33,5			42,0	44,2			82,0	42,2			40,4	41,9		
	Average price	66,70 \$	77,30 \$			97,10 \$	98,50 \$			111,30 \$	120,80 \$			100,20 \$	104,20 \$		
Year-to-date average	Available rooms	1 279	1 285	1 270	-1,2%	4 227	4 509	4 646	3,0%	3 672	3 686	3 697	0,3%	9 172	9 475	9 604	1,4%
	Occupancy rate	32,5	32,7	34,2	4,6%	53,1	49,9	50,8	1,8%	57,3	54,9	54,8	-0,2%	51,5	49,3	49,9	1,2%
	Average price	67,69 \$	67,46 \$	73,68 \$	9,2%	92,85 \$	96,80 \$	95,38 \$	-1,5%	123,13 \$	119,03 \$	122,36 \$	2,8%	103,98 \$	103,76 \$	104,48 \$	0,7%
Annual average	Available rooms	1 318	1 341			4 375	4 532			3 678	3 695			9 368	9 565		
	Occupancy rate	45,9	46,2			62,2	60,2			66,1	64,8			61,3	59,9		
	Average price	82,72 \$	83,63 \$			105,74 \$	106,62 \$			139,87 \$	140,37 \$			117,78 \$	118,06 \$		

Québec City



LODGING STATISTICS - OCCUPIED ROOMS
APRIL 2007

		Québec City				Green belt				Québec City and Area			
		2005	2006	2007	% Var	2005	2006	2007	% Var	2005	2006	2007	% Var
January	Daily	3 879	3 757	3 953	5,2%	819	821	837	1,9%	4 691	4 571	4 791	4,8%
	Monthly	120 258	116 474	122 552	5,2%	25 400	25 464	25 945	1,9%	145 436	141 712	148 536	4,8%
February	Daily	5 732	5 725	5 799	1,3%	1 203	1 189	1 103	-7,2%	6 927	6 907	6 881	-0,4%
	Monthly	160 482	160 306	162 363	1,3%	33 707	33 294	30 891	-7,2%	193 948	193 403	192 680	-0,4%
March	Daily	4 404	4 627	4 784	3,4%	1 010	930	976	4,9%	5 410	5 547	5 752	3,7%
	Monthly	136 520	143 422	148 300	3,4%	31 298	28 816	30 258	5,0%	167 707	171 956	178 302	3,7%
April	Daily	5 005	4 667	4 730	1,3%	437	379	451	19,0%	5 417	5 012	5 129	2,3%
	Monthly	150 127	140 015	141 891	1,3%	13 115	11 359	13 524	19,1%	162 497	150 348	153 862	2,3%
May	Daily	5 843	6 371			593	590			6 326	6 850		
	Monthly	181 126	197 491			18 391	18 294			196 097	212 362		
June	Daily	6 880	6 535			964	944			7 792	7 446		
	Monthly	206 412	196 035			28 920	28 334			233 761	223 368		
July	Daily	7 879	7 185			1 195	1 209			9 024	8 398		
	Monthly	244 261	222 735			37 044	37 491			279 745	260 340		
August	Daily	7 726	7 826			1 239	1 213			8 938	9 031		
	Monthly	239 497	242 603			38 403	37 617			277 091	279 972		
September	Daily	6 856	6 948			1 089	1 175			7 907	8 093		
	Monthly	205 668	208 448			32 684	35 236			237 199	242 789		
October	Daily	6 250	6 276			836	835			7 050	7 054		
	Monthly	193 751	194 570			25 908	25 886			218 538	218 666		
November	Daily	4 666	4 828			341	370			4 955	5 177		
	Monthly	139 974	144 840			10 234	11 094			148 659	155 302		
December	Daily	3 790	3 984			664	812			4 432	4 792		
	Monthly	117 500	123 500			20 596	25 173			137 379	148 549		
Average year-to-date annual	Daily	4 755	4 694	4 817	2,6%	867	830	842	1,4%	5 611	5 509	5 638	2,3%
	Monthly	5 743	5 727			866	872			6 572	6 573		
Total year-to-date annual	Monthly	141 847	140 054	143 777	2,7%	25 880	24 733	25 155	1,7%	167 397	164 355	168 345	2,4%
	Annual	2 095 576	2 090 439			315 700	318 058			2 398 057	2 398 767		



TOURIST INFORMATION CENTRES (TIC)



?	Services									
	TIC Information request				Number of TIC visitors					
	2005	2006	2007	% Var	2005	2006	2007	% Var	average of visitors per action 2006	2007
January	1 426	1 223	1 303	6,5%	3 739	2 787	3 191	14,5%	2,3	2,4
February	2 242	1 739	1 751	0,7%	6 882	4 789	4 950	3,4%	2,8	2,8
March	1 997	1 851	1 764	-4,7%	5 692	4 796	4 645	-3,1%	2,6	2,6
April	2 056	2 276	2 024	-11,1%	5 256	5 435	4 695	-13,6%	2,4	2,3
May	3 288	3 869			7 548	8 897			2,3	
June	6 752	6 346			18 600	14 951			2,4	
July	14 973	14 724			41 780	38 849			2,6	
August	13 101	15 398			36 399	42 719			2,8	
September	6 184	6 992			15 284	17 168			2,5	
October	4 792	5 296			11 567	12 039			2,3	
November	1 127	1 235			2 528	2 680			2,2	
December	986	1 174			2 400	3 079			2,6	
Year-to-date Total	7 721	7 089	6 842	-3,5%	21 569	17 807	17 481	-1,8%	2,5	2,6
	58 924	62 123			157 675	158 189			2,5	

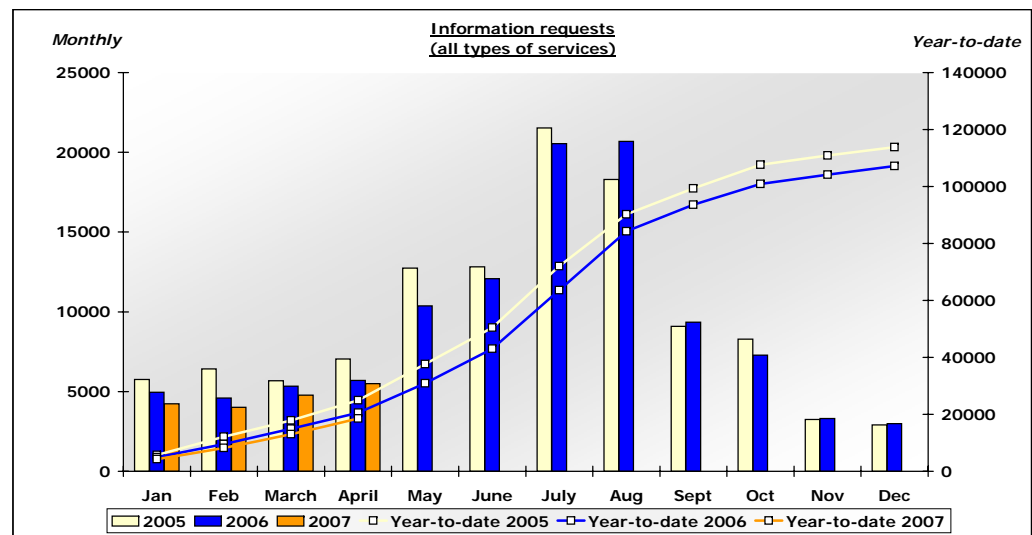
11,1% decrease in TIC information request in April 2007

	Telephone assistance			
	2005	2006	2007	% Var
April	959	688	969	40,8%
Year-to-date Total	3 908	3 682	3 395	-7,8%
	14 490	13 436		

	Shipping and answers by mail			
	2005	2006	2007	% Var
April	2 246	1 161	1 131	-2,6%
Year-to-date Total	6 415	4 384	4 046	-7,7%
	20 227	15 210		

	Answers by Email			
	2005	2006	2007	% Var
April	1 719	1 483	1 287	-13,2%
Year-to-date Total	6 535	5 174	3 907	-24,5%
	16 052	13 622		

	Service sales (lodging reservations and service provision)			
	2005	2006	2007	% Var
April	65	81	92	13,6%
Year-to-date Total	310	251	318	26,7%
	4 100	2 797		



Source : TIC Survey, OCT



	Total results (All types of services)		
	April	Year-to-date	Total
2005	7 045	24 889	113 793
2006	5 689	20 580	107 188
2007	5 503	18 508	
%Var	-3,3%	-10,1%	

OVERVIEW OF CONFIRMED CONVENTIONS AND EVENTS FOR 2006 AND 2007

Partial data on confirmed conventions with 50 delegates or more as of April 2, 2007

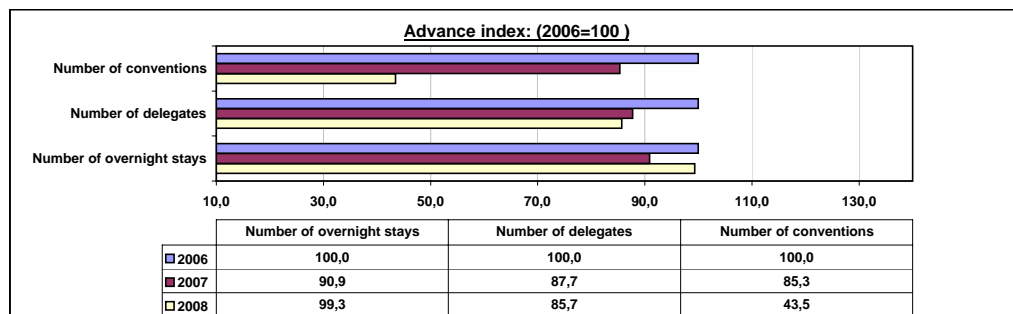
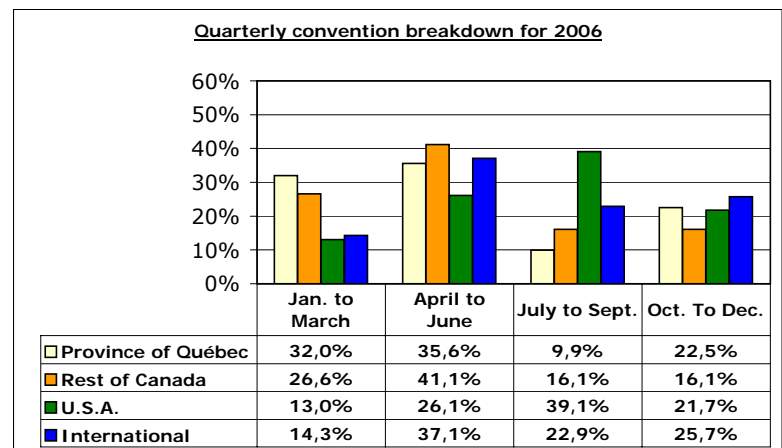
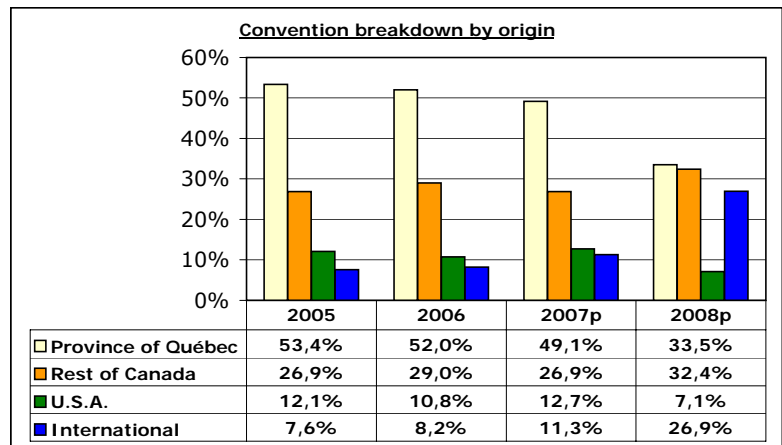
CAUTION

These statistics have been compiled with data received on a voluntary basis. They are presented for your information and therefore are not representative of all conventions and events held in the Greater Québec City Area.

Type	2005	2006	partial data	
			2007p	2008p
Number of conventions				
Associations	277	246	187	128
Companies	94	79	82	8
Others	54	43	45	24
Sub-total convention	425	368	314	160
Events	47	59	32	22
Total	472	427	346	182
Average length (days)	3,1	2,6	2,7	3,8

Number of delegates				
Associations	83 822	69 154	57 773	71 639
Companies	15 135	20 337	16 323	1 780
Others	11 170	14 621	17 254	15 795
Sub-total convention	110 127	104 112	91 350	89 214
Events (attendance)	941 236	999 989	118 945	131 591
Total	1 051 363	1 104 101	210 295	220 805
Average stay (days)	3,3	3,4	3,8	4,8

Number of overnight stays				
Associations	96 866	102 966	92 547	120 699
Companies	24 767	34 430	29 652	2 478
Others	19 386	25 023	25 453	38 135
Sub-total convention	141 019	162 419	147 652	161 312
Events	32 350	26 463	50 922	56 650
Total	173 369	188 882	198 574	217 962



NOTE

Calculated by dividing the number of conventions for 2007 by the number of conventions for 2006. The same equation can be used for the delegates index and the overnight stays index.

RÉGION'S SOCIOECONOMIC STATISTICS
APRIL 2007

	Québec City and Area			Province of Québec			Canada		
	April 2006	April 2007	%cha	April 2006	April 2007	%cha	April 2006	April 2007	%cha
Population over 15 years old ('000)	558,2	563,2	0,9%	6 230,3	6 297,9	1,1%	26 100,2	26 475,9	1,4%
Labor force ('000)	368,6	362,5	-1,7%	4 030,9	4 086,5	1,4%	17 334,5	17 699,4	2,1%
Employment ('000)	347,3	342,1	-1,5%	3 672,4	3 753,1	2,2%	16 195,9	16 575,7	2,3%
Unemployment ('000)	21,3	20,5	-3,8%	358,5	333,4	-7,0%	1 138,6	1 123,7	-1,3%
Unemployment rate (%)	5,8	5,7	-1,7%	8,9	8,2	-7,9%	6,6	6,3	-4,5%
Consumer price index (1992=100)	126,7	128,1	1,1%	126,0	127,8	1,4%	130,0	132,8	2,2%

Source : Statistics Canada, CANSIM II

BRIEF DEMOGRAPHIC PROFILE
QUÉBEC CITY AND AREA - 2005

	POPULATION 2005	AREA KM ²
Québec City	532 329	547,9
La Cité (1)	65 086	12,8
Les Rivières (2)	62 030	51,4
Sainte-Foy - Sillery (3)	71 687	28,8
Charlesbourg (4)	73 678	66,4
Beauport (5)	76 298	73,9
Limouilou (6)	47 134	9,7
La-Haute-Saint-Charles (7)	49 477	71,6
Laurentien (8)	86 939	233,3
RCM of La Côte-de-Beaupré	22 556	707,2
RCM of L'Île-d'Orléans	6 781	191,8
RCM of Portneuf	46 665	4 095,7
RCM of La Jacques-Cartier	29 708	3 310,1
TOTAL	638 039	8 852,7

Source : Institut de la statistique du Québec, 2005 Estimation

ROAD DISTANCE TO QUÉBEC CITY AND AREA

	KM
Montreal	253
Ottawa	453
Boston	761
Toronto	798
New York	863
Philadelphia	995
Halifax	1043
Detroit	1194
Washington	1295
Chicago	1621

Source : Transport Quebec

TEMPERATURES

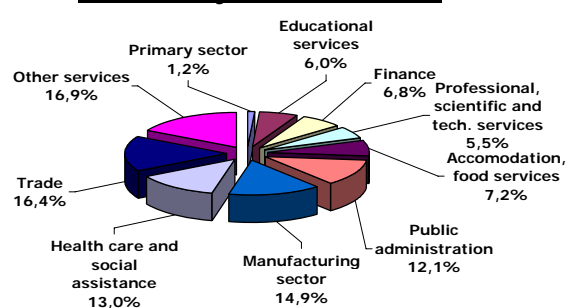
	Average (30 years) °C	Average 2006 °C
January		
Daily minimum	-17,6	-10,9
Daily maximum	-7,9	-3,2
July		
Daily minimum	13,4	15,2
Daily maximum	25,0	26,3

PRECIPITATIONS

Annual average-rain (mm)	1230,3	1214,6
--------------------------	--------	--------

Source : Environment Canada

Breakdown of employment by industry
Québec City and Area - 2005



Source : Statistics Canada, Labour force survey

Jobs linked to tourist activity in 2004

Direct jobs	28 015
Indirect jobs	10 085
Total	38 100

Source : QCT, Development, Strategy and Planning Division

OVERVIEW OF TOURISTS WHO VISITED QUÉBEC CITY IN 2004
 (Results of this survey are updated annually)

Tourists:	Origin		Total		Total expenditures	
	(person-visits)		number of nights		(in CDN dollars)	
	'000	%	'000	%	'000 \$	%
Province of Québec	3 502	66,7%	8 396	58,4%	640 683	43,4%
Rest of Canada	645	12,3%	2 328	16,2%	231 482	15,7%
Total-Canada	4 147	79,0%	10 724	74,6%	872 165	59,0%
United States	685	13,0%	2 112	14,7%	420 755	28,5%
Overseas	418	8,0%	1 547	10,8%	184 568	12,5%
Total	5 250	100,0%	14 383	100,0%	1 477 488	100,0%

	Average expenditures	Visit	Average expenditures
	per visit	duration	per night
	\$	(nights)	\$
Province of Québec	183,00	2,40	76,31
Rest of Canada	358,89	3,61	99,43
Total-Canada	210,36	2,59	81,33
United States	613,90	3,08	199,22
Overseas	441,42	3,70	119,31
Total	282,61	2,74	102,72

Same-day visitors	Origin		Total expenditures	
	(person-visits)		(in CDN dollars)	
	'000	%	'000 \$	%
Province of Québec	3 427	95,2%	212 684	98,3%
Rest of Canada	31	0,9%	2 863	1,3%
Total-Canada	3 458	96,1%	215 547	99,6%
United States	82	2,3%	878	0,4%
Overseas	59	1,6%	n/d	
Total	3 599	100,0%	216 425	100,0%
Visitors:	8 849	100,0%	1 693 913	100,0%

Définitions:

Visitor: Any person who is passing through the region and whose residence is located **outside of an 80-km radius**.

Tourist: Visitor staying **at least one night** in the region.

Same-day visitor: Visitor **not staying overnight**.

OVERVIEW OF TOURISTS WHO VISITED QUÉBEC CITY IN 2004 (cont.)
 (Results of this survey are updated annually)

Visit Quarter (distribution of persons-travels)

	I (winter)	II (spring)	III (summer)	IV (fall)
	%	%	%	%
Province of Québec	19,9	20,0	36,9	23,2
Rest of Canada	20,0	17,5	49,0	13,5
Total-Canada	19,9	19,7	38,8	21,7
United States	12,1	19,9	46,0	22,0
Overseas	7,7	23,9	56,5	12,0
Total	17,9	20,0	41,1	20,9

Primary Purpose of trip

	Pleasure	Business	Visiting friends or relatives	Others
	%	%	%	%
Province of Québec	44,0	11,1	37,0	7,9
Rest of Canada	55,5	7,6	27,9	9,0
Total-Canada	45,8	10,6	35,6	8,0
United States	78,7	10,5	5,5	5,3
Overseas	67,9	9,8	20,1	2,2
Total	51,8	10,5	30,5	7,2

Accommodation

	Commercial	Private	Not specified
	%	%	%
Province of Québec	42,1	55,6	2,3
Rest of Canada	67,4	28,9	3,7
Total-Canada	46,0	51,5	2,5
United States	85,7	4,8	9,5
Overseas	76,3	13,4	10,3
Total	53,6	42,3	4,1

Source : Statistics Canada, CITIES 2004 Project (special QCT compilation)

OVERVIEW OF TOURISTS WHO VISITED QUÉBEC CITY IN 2004 (cont.)
 (Results of this survey are updated annually)

	<u>Average expenditures</u>					
	Accommodation		Food & beverage		Vehicule operation (incl. rental)	
	\$	%	\$	%	\$	%
Province of Québec	46,21 \$	25,3%	51,08 \$	27,9%	34,90 \$	19,1%
Rest of Canada	141,11 \$	39,3%	93,57 \$	26,1%	66,40 \$	18,5%
Total-Canada	60,96 \$	29,0%	57,69 \$	27,4%	39,80 \$	18,9%
United States	279,66 \$	45,6%	149,33 \$	24,3%	52,26 \$	8,5%
Overseas	159,78 \$	36,2%	104,70 \$	23,7%	61,26 \$	13,9%
Total	97,78 \$	34,6%	73,70 \$	26,1%	43,32 \$	15,3%
Total - pleasure	117,73 \$	36,4%	86,50 \$	26,8%	41,66 \$	12,9%
Total - business	222,49 \$	44,8%	115,34 \$	23,2%	71,80 \$	14,5%
Total - visiting friends/relative	22,18 \$	15,9%	38,75 \$	27,7%	35,24 \$	25,2%

	Recreation & entertainment		Others		TOTAL	
	\$	%	\$	%	\$	%
	Province of Québec	17,34 \$	9,5%	33,47 \$	18,3%	183,00 \$
Rest of Canada	17,72 \$	4,9%	40,09 \$	11,2%	358,89 \$	100,0%
Total-Canada	17,40 \$	8,3%	34,51 \$	16,4%	210,36 \$	100,0%
United States	46,84 \$	7,6%	85,81 \$	14,0%	613,90 \$	100,0%
Overseas	36,61 \$	8,3%	79,07 \$	17,9%	441,42 \$	100,0%
Total	22,87 \$	8,1%	44,94 \$	15,9%	282,61 \$	100,0%
Total - pleasure	31,79 \$	9,8%	45,39 \$	14,0%	323,07 \$	100,0%
Total - business	19,74 \$	4,0%	67,28 \$	13,5%	496,65 \$	100,0%
Total - visiting friends/relative	12,78 \$	9,1%	30,77 \$	22,0%	139,72 \$	100,0%

	<u>Leading tourist activities (total > 100%)</u>			
	Visiting friends or relatives	Shopping	Sightseeing	Visiting national or provincial parks
	%	%	%	%
Province of Québec	82,0	44,3	29,0	10,9
Rest of Canada	74,9	67,8	67,8	24,0
Total-Canada	80,9	48,0	35,0	12,9
United States	14,3	80,6	85,7	35,6
Overseas	46,7	87,8	84,0	58,9
Total	69,4	55,4	45,5	19,6

	Sports/outdoor activities	Nightlife	Visiting zoo, aquarium or botanical gardens
	%	%	%
	Province of Québec	38,2	14,1
Rest of Canada	43,9	32,2	17,7
Total-Canada	39,1	16,9	9,9
United States	25,7	31,4	13,1
Overseas	35,6	34,9	38,0
Total	37,1	20,2	12,6

OVERVIEW OF TOURISTS WHO VISITED QUÉBEC CITY IN 2004 (end)
 (Results of this survey are updated annually)

Visit Quarter by origin (person-visits)

	I (winter)		II (spring)		III (summer)	
	('000)	%	('000)	%	('000)	%
Province of Québec	698	74,1%	702	66,8%	1 291	59,8%
Rest of Canada	129	13,7%	113	10,8%	316	14,6%
Total-Canada	827	87,8%	815	77,5%	1607	74,5%
United States	83	8,8%	136	12,9%	315	14,6%
Overseas	32	3,4%	100	9,5%	236	10,9%
Total	942	100,0%	1051	100,0%	2158	100,0%

	IV (fall)		TOTAL	
	('000)	%	('000)	%
Province of Québec	811	73,8%	3 502	66,7%
Rest of Canada	87	7,9%	645	12,3%
Total-Canada	898	81,7%	4 147	79,0%
United States	151	13,7%	685	13,0%
Overseas	50	4,5%	418	8,0%
Total	1099	100,0%	5 250	100,0%

Visit Quarter by origin (person-visits) - 2000-2004 comparative

	I (winter)		II (spring)		III (summer)	
	('000)	%	('000)	%	('000)	%
2000	793	17,1%	982	21,2%	1 840	39,8%
2001	854	19,1%	1 175	26,2%	1 532	34,2%
2002	1 165	21,2%	1 169	21,3%	2 264	41,1%
2003	1 046	20,6%	1 121	22,1%	1 784	35,1%
2004	942	17,9%	1 051	20,0%	2 158	41,1%

	IV (fall)		TOTAL	
	('000)	%	('000)	%
2000	1 013	21,9%	4 628	100,0%
2001	917	20,5%	4 478	100,0%
2002	899	16,4%	5 497	100,0%
2003	1 125	22,2%	5 076	100,0%
2004	1 099	20,9%	5 250	100,0%

Source : Statistics Canada, CITIES 2004 Project (special QCT compilation)